

# IMAGENET Whining

*or*

word vector : word analogy :: convnet activations : image analogy

Aaron Schumacher

Hack and Tell DC

2017-09-14

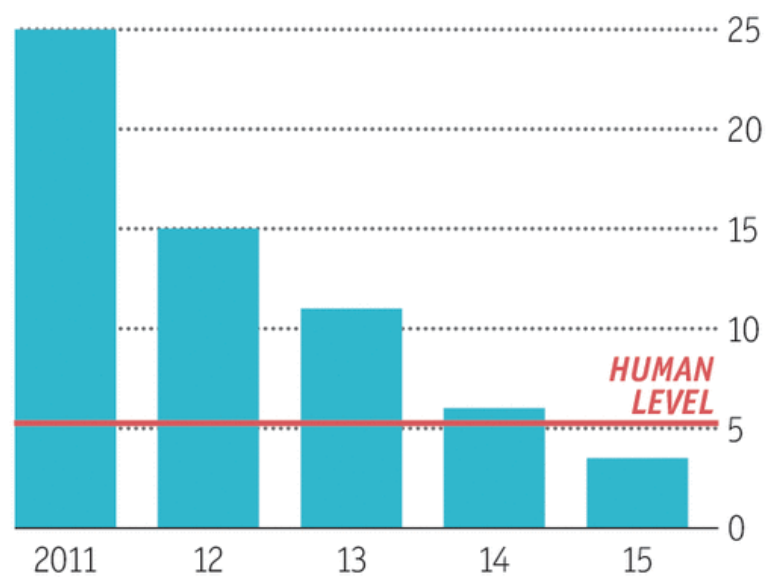
see also: [http://planspace.org/20170911-problems\\_with\\_imagenet\\_and\\_its\\_solutions/](http://planspace.org/20170911-problems_with_imagenet_and_its_solutions/)

IM  GENET

# IMAGENET

## Ever cleverer

Error rates on ImageNet Visual Recognition Challenge, %



Sources: ImageNet; Stanford Vision Lab





croquet ball



croquet ball

tennis ball





unicycle





unicycle  
person





goldfish



goldfish

goblet





person



person

dumbbell

water bottle

hammer



<https://research.googleblog.com/2015/06/inceptionism-going-deeper-into-neural.html>





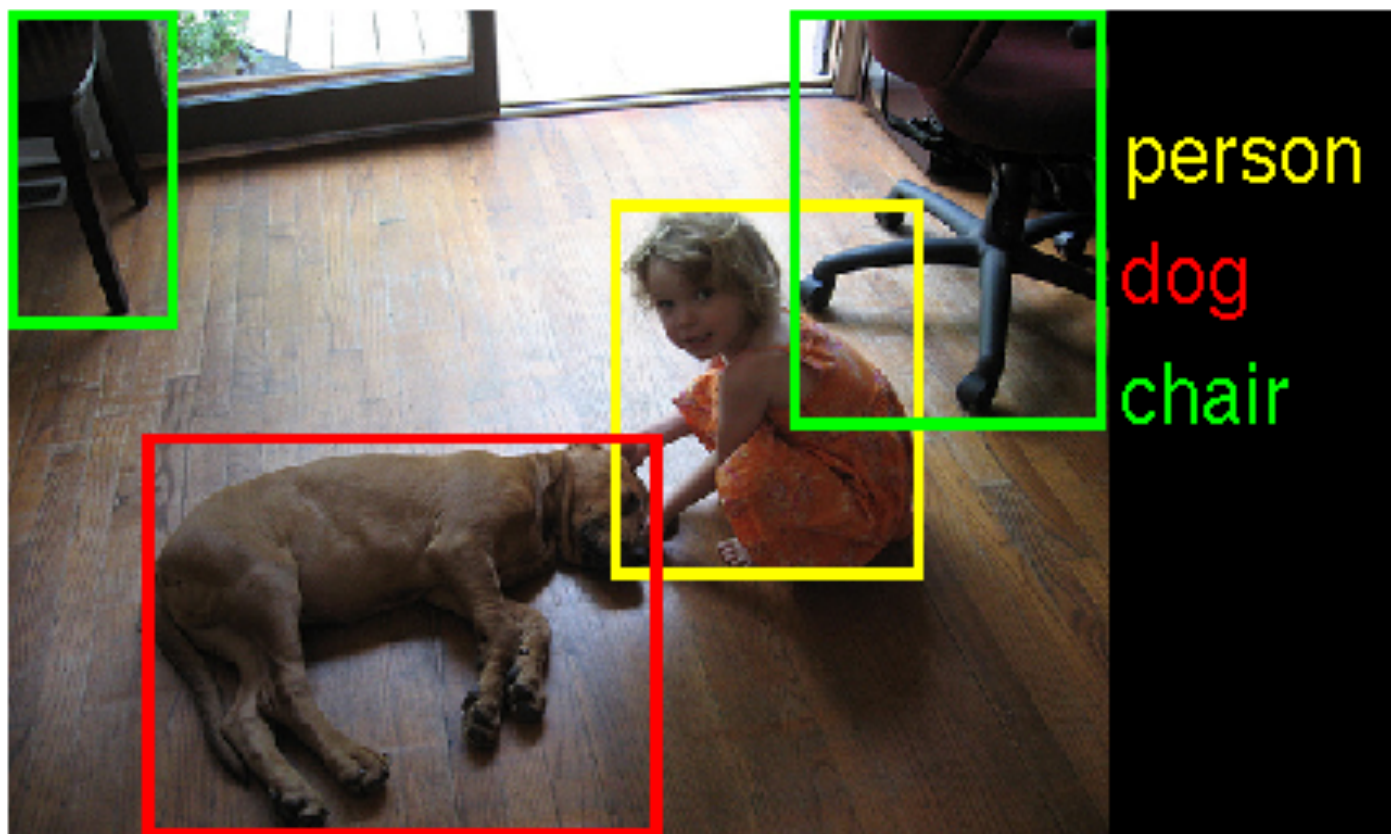


burrito



burrito

guacamole?



person

dog

chair







jellyfish



jellyfish  
mushroom



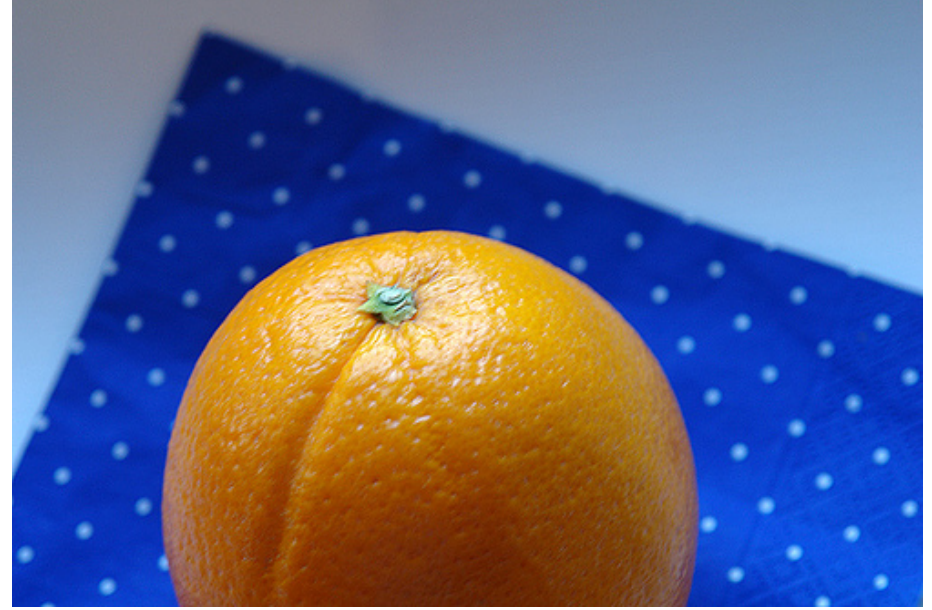
king : queen :: man : woman

total fail

cheating!







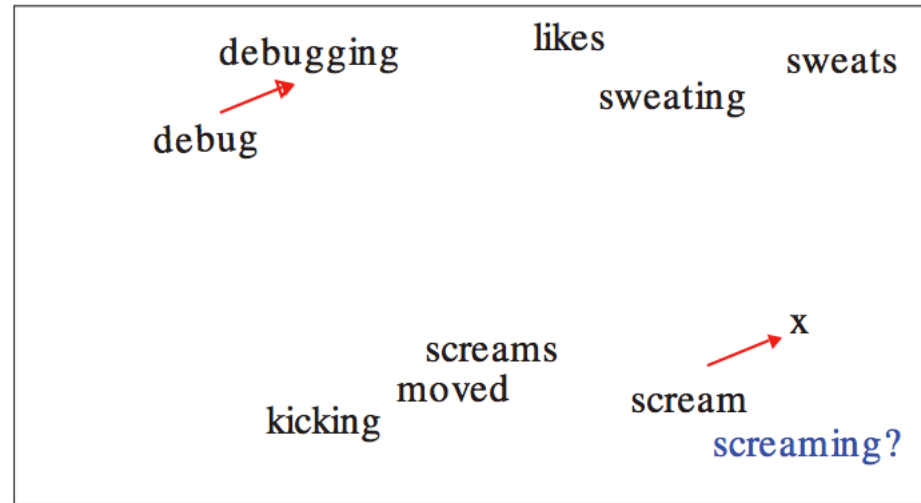


Figure 2: When  $a^* - a$  is small and  $b$  and  $b^*$  are close, the expected answer may be returned even when the offsets are inconsistent (here *screaming* is closest to  $x$ ).



a woman riding a horse on a dirt road



an airplane is parked on the tarmac at an airport



a group of people standing on top of a beach



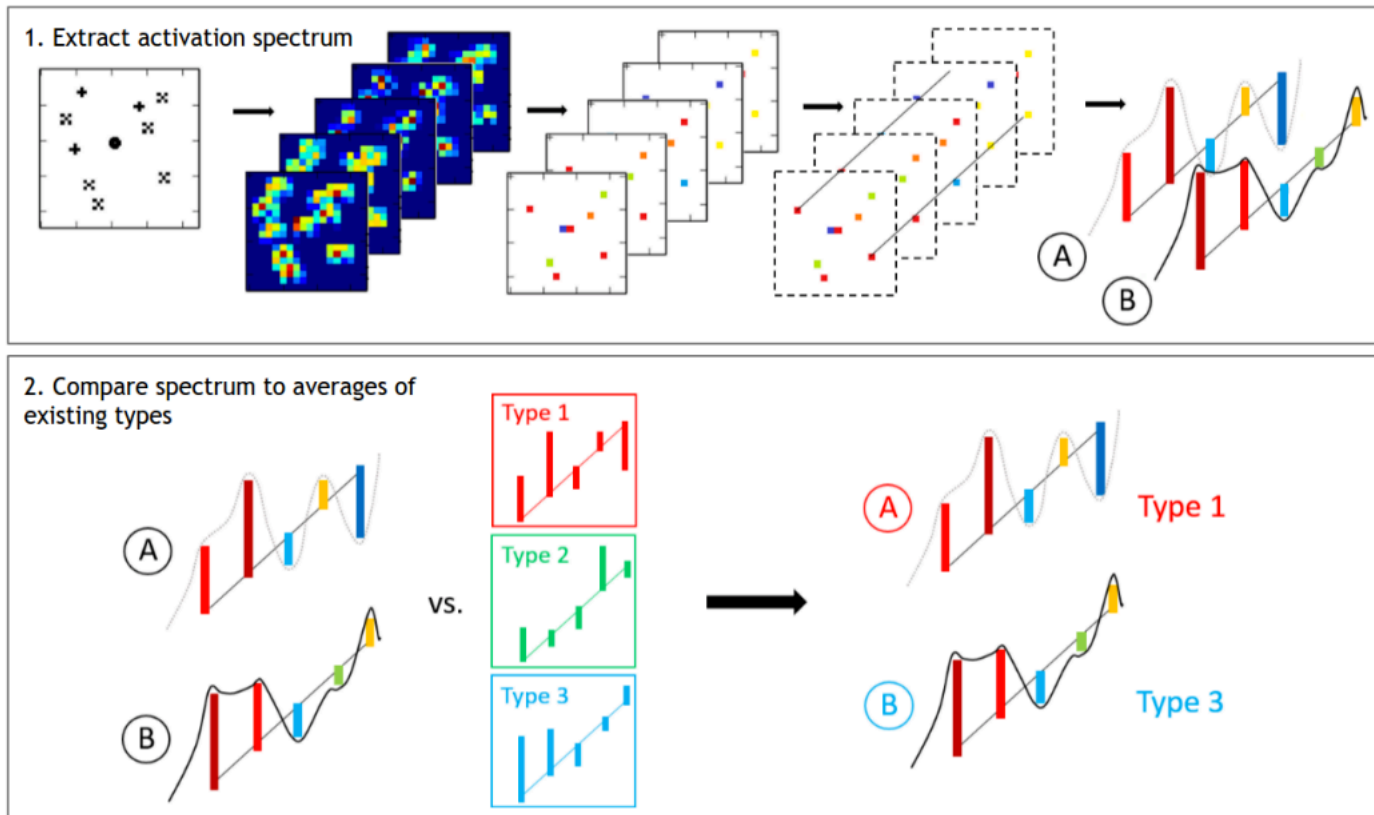


Figure 3: Unsupervised extraction of low-level symbols from the information provided by the convolutional autoencoder. The spectrum of activations across features is obtained by selecting the pixels with the highest activations across features. In a second step each symbol is assigned one of the existing types by comparing their spectra. If no match is found a new type is created.

Thanks!